



# Lake Marion Greenway and North Creek Greenway Natural Resource Management Plans

Christian Klatt, Natural Resource Specialist  
Parks Department  
Physical Development Division

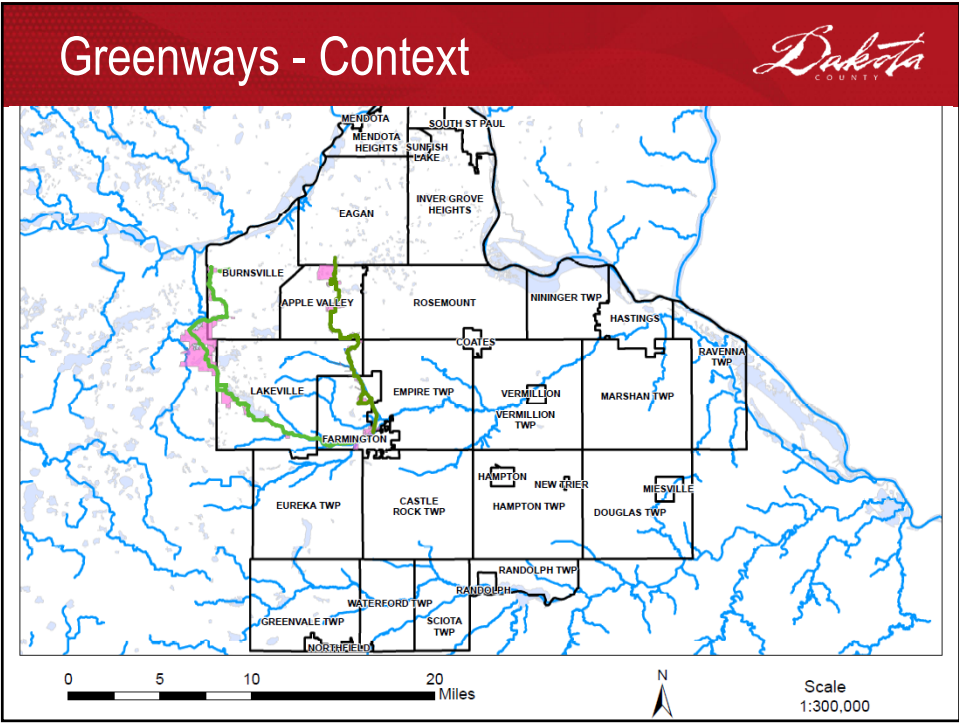
1

## Overview

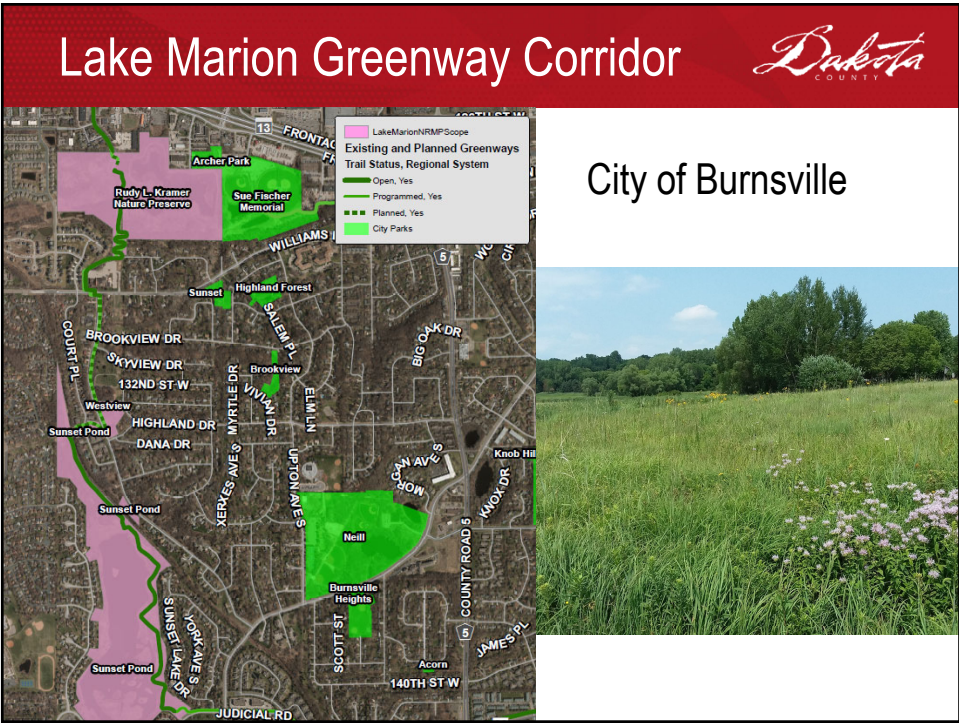


- Lake Marion Greenway Corridor
- North Creek Greenway Corridor
- Greenway Cost Share
- Project Timeline and Engagement
- Questions/Comments

2



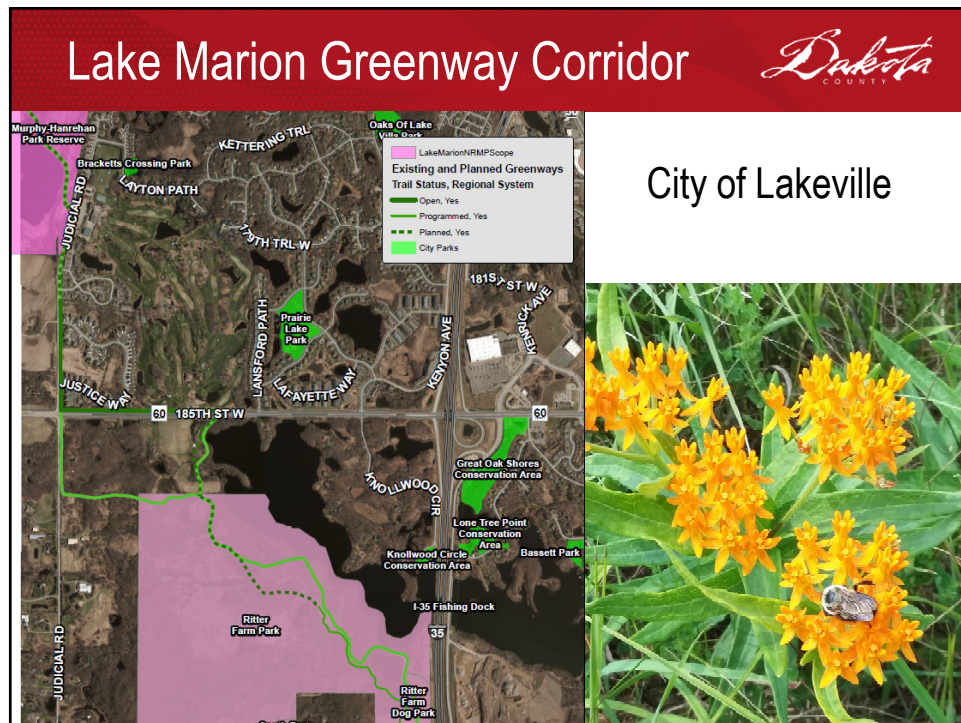
3



4

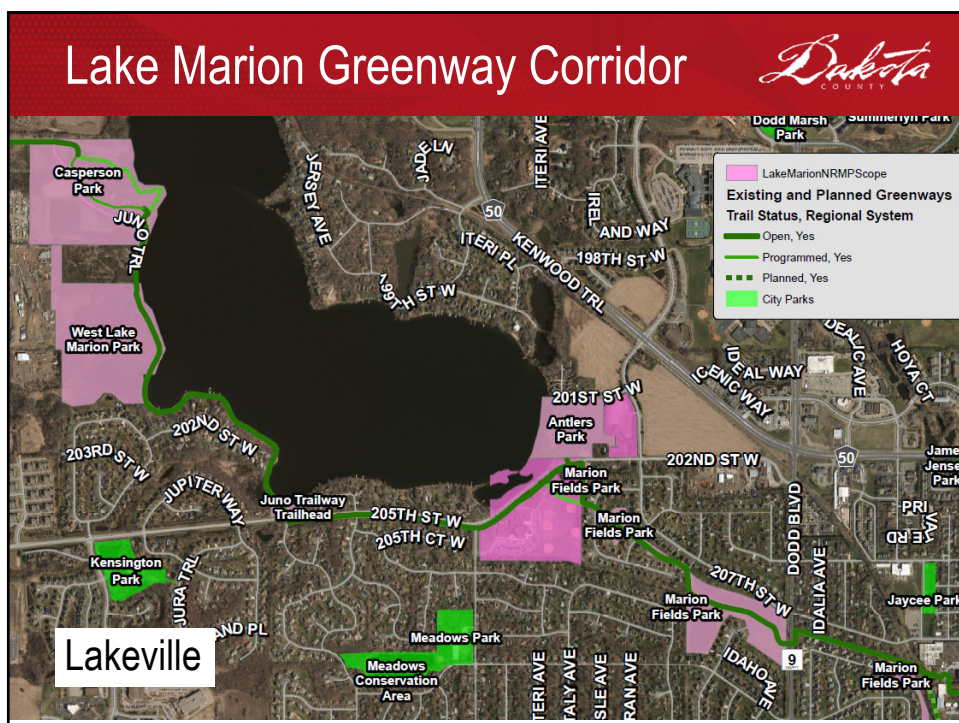


5

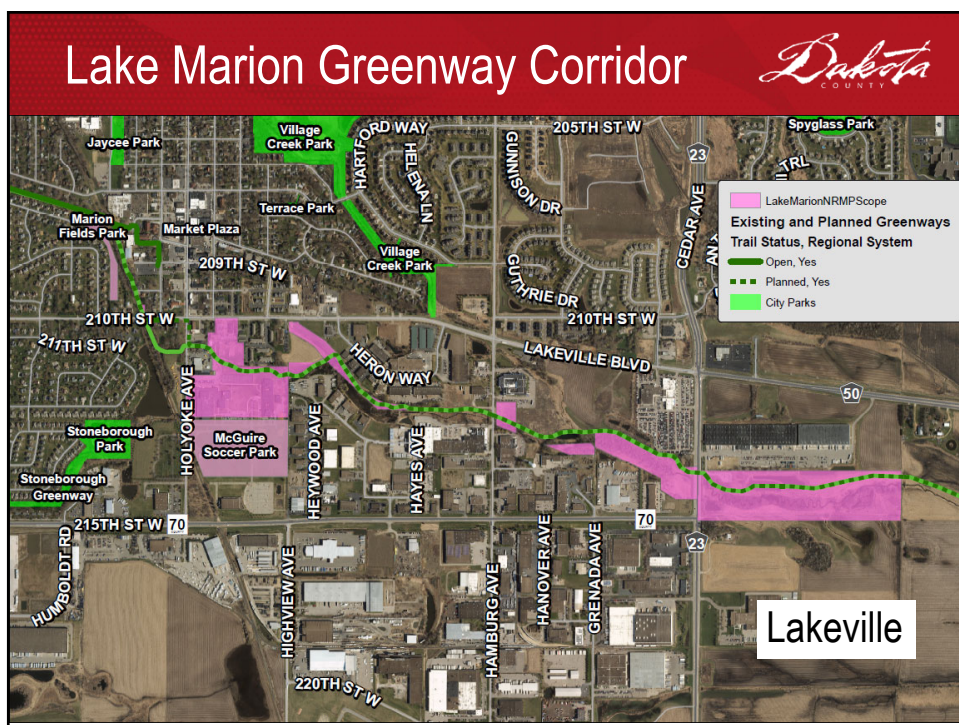


6

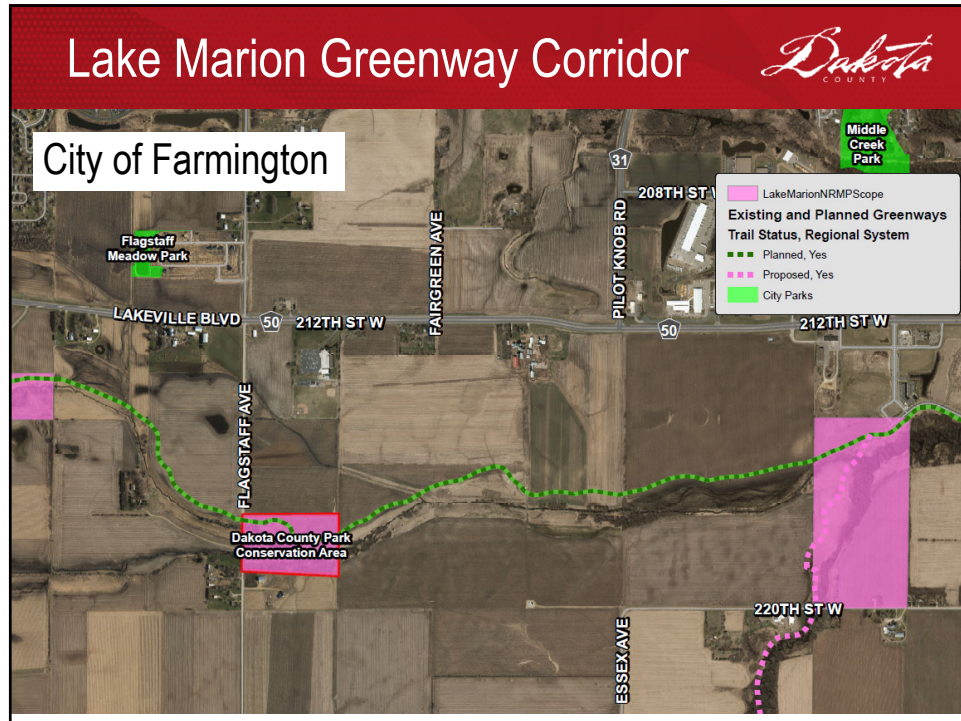




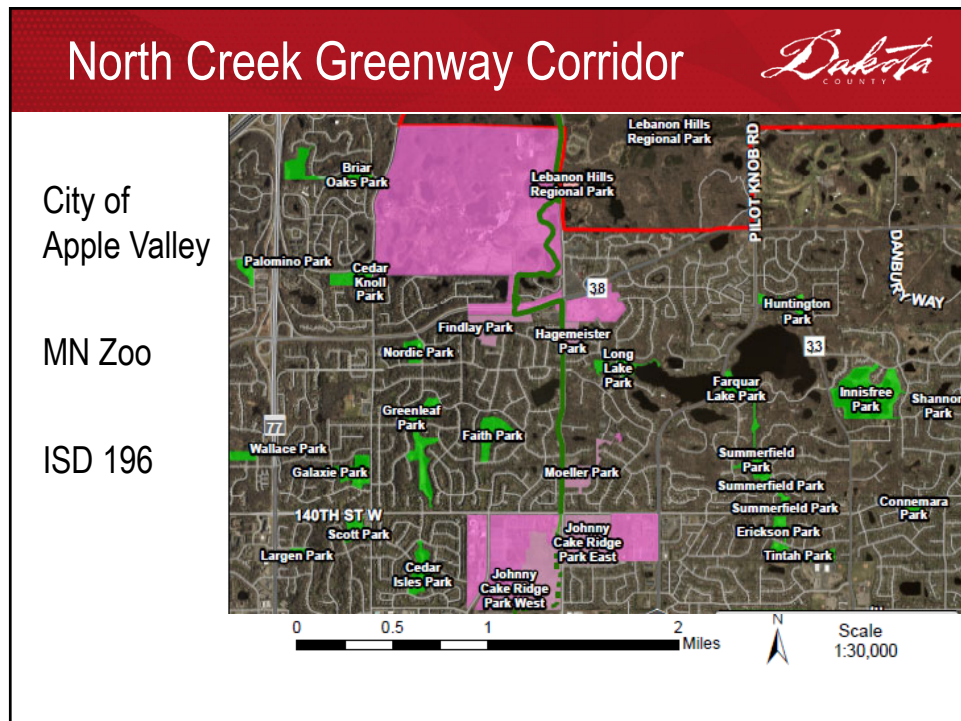
7



8

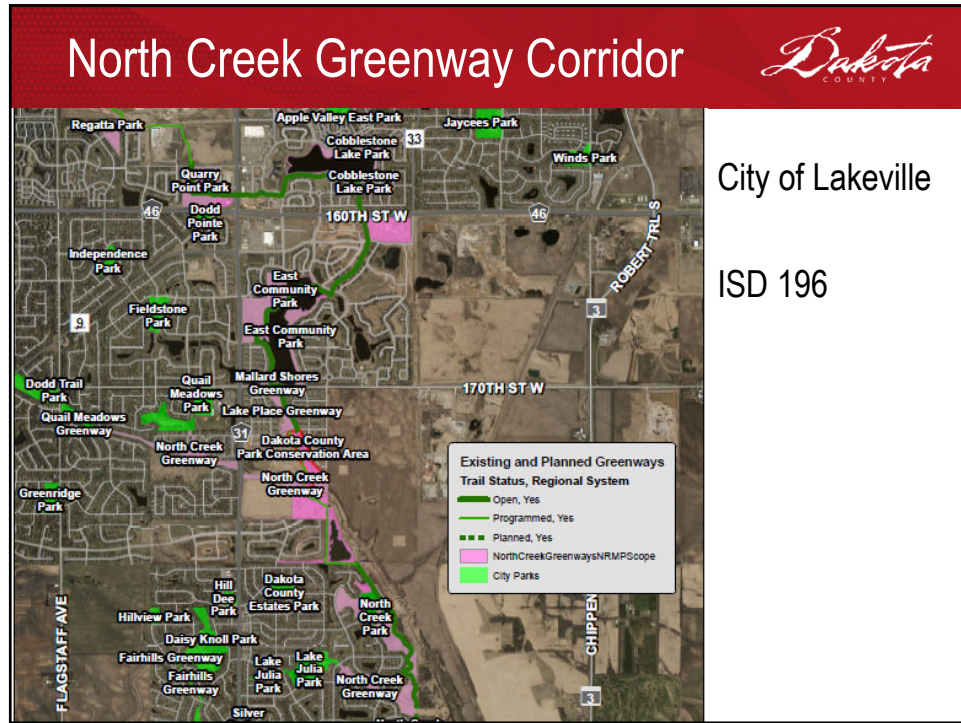


9

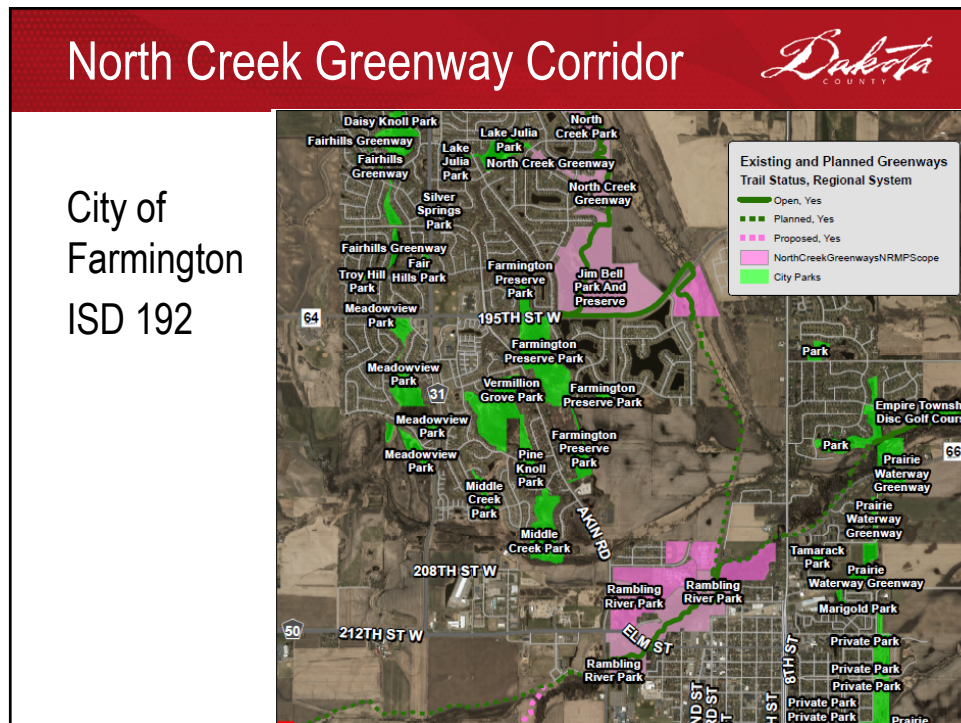


10

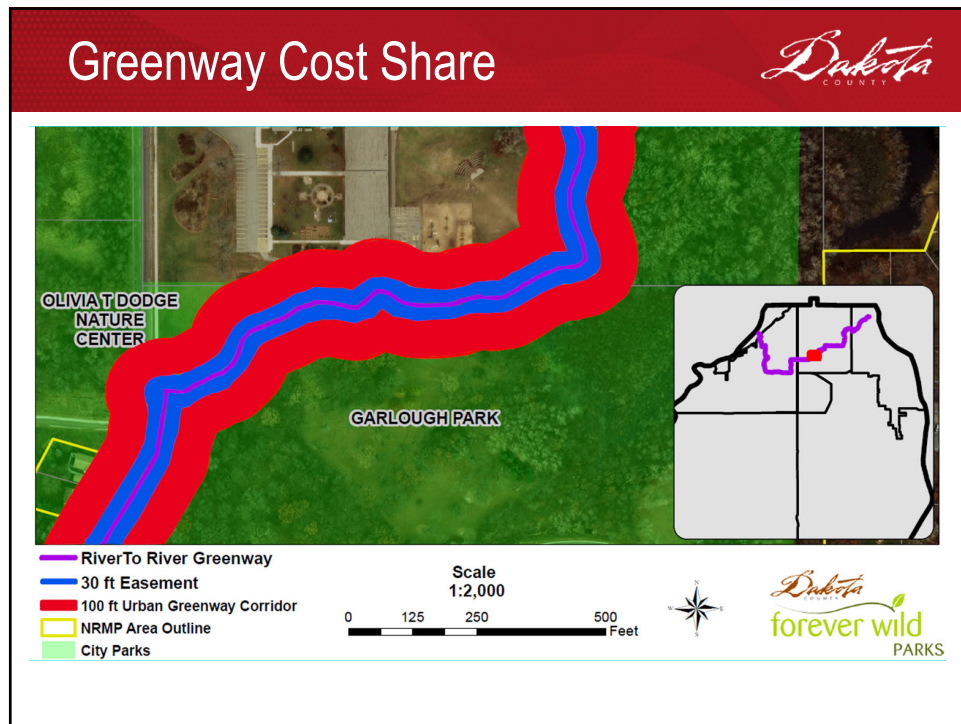




11




12



13

## Greenway Cost Share



Greenway Roles and Responsibilities	30 foot Trail Easement	100 – 300 foot Greenway Corridor	Natural Lands Beyond Corridor
<b>Grant Match Cost Share</b>	County	County and Landowner have equal cost share (50/50).	County/Landowner cost share to be determined by Land Conservation Plan.
<b>Restoration Project Management</b>	County	County/Landowner Partnership.	Landowner. County may assist as determined by Land Conservation Plan.
<b>Maintenance</b>	County	County. Landowner may assist.	County/Landowner cost share to be determined by Land Conservation Plan.


14

Project Timeline and Engagement


Project Timeline:

RFP Issued	May 2021
Execution of Contract	July 2021
Project Start	July 2021
Meetings with City Staff and Technical Advisory Group	August 2021
Research and Project Inventory	June-November, 2021
First Draft due	December, 2021
Public Meetings with Cities – Advisory Councils, Workshops	Sept-Dec 2021
Public Meeting for NRMPs	January 2022
Final Draft due	February 2022
Wrap up / Plan Adoption	March 2022

15



Questions?

16